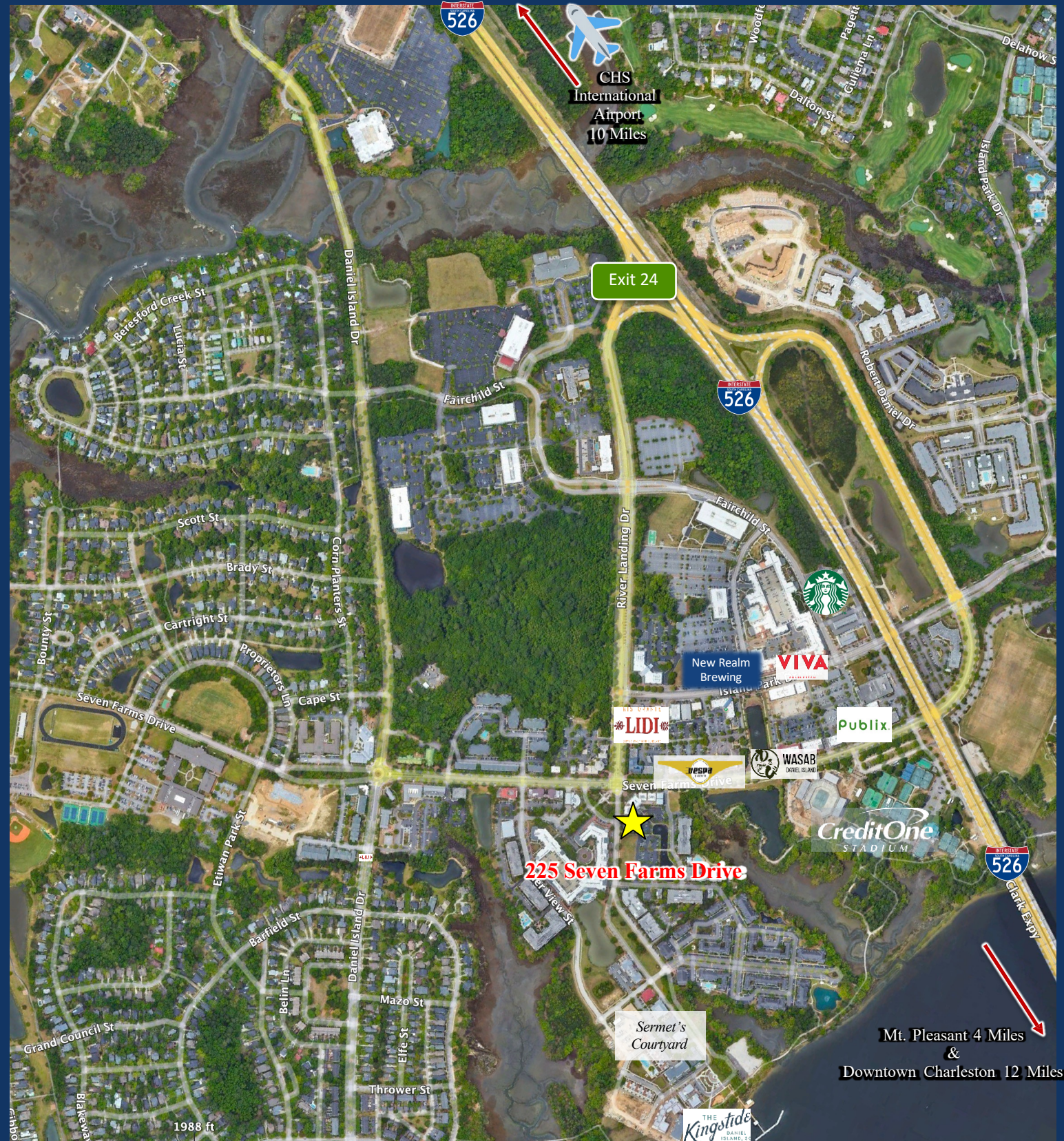


**225 Seven Farms Drive, Suite 108 B – 1,012 RSF  
Daniel Island, SC**



**225 Seven Farms Drive, Suite 108 B – 1,012 RSF  
Daniel Island, SC  
CLASS “A” Office for LEASE**



- Available April 1, 2024
- Kitchenette break room
- Two interior restrooms
- Abundant parking lot and highly secure building

- Walking distance to all Daniel Island amenities: restaurants, retail & residential
- Large bullpen for Trading Desk
- Open Courtyard with outdoor seating

**Michael G. White, SIOR, CCIM**  
Broker-in-Charge  
843.819.1234

**CHARLESTON INDUSTRIAL**

**Madeline Mary White**  
Leasing Agent  
843.819.0122

[Madeline.White@CharlestonIndustrial.com](mailto:Madeline.White@CharlestonIndustrial.com)

**Michael G. White, SIOR, CCIM**  
Broker-in-Charge  
843.819.1234

**CHARLESTON INDUSTRIAL**

**Madeline Mary White**  
Leasing Agent  
843.819.0122

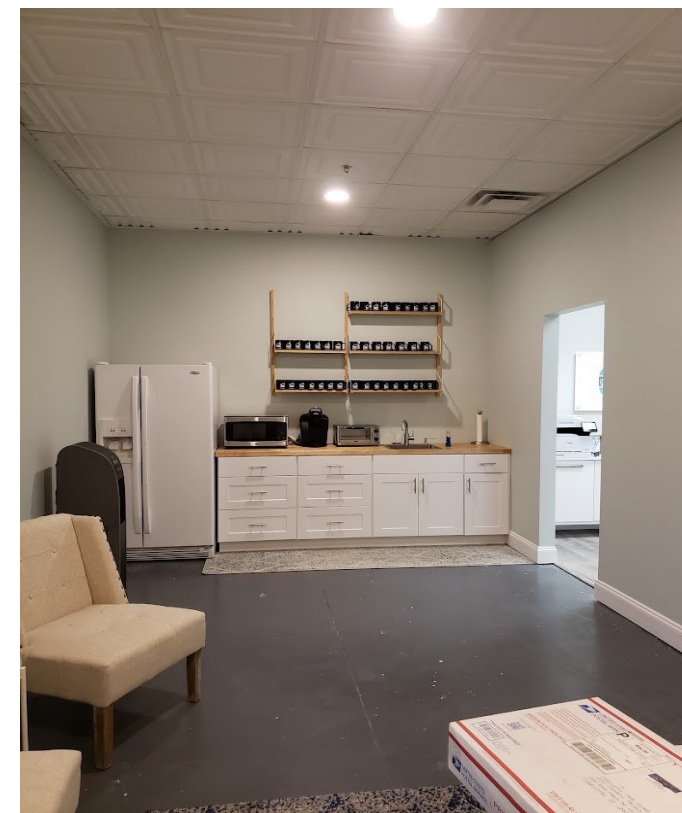
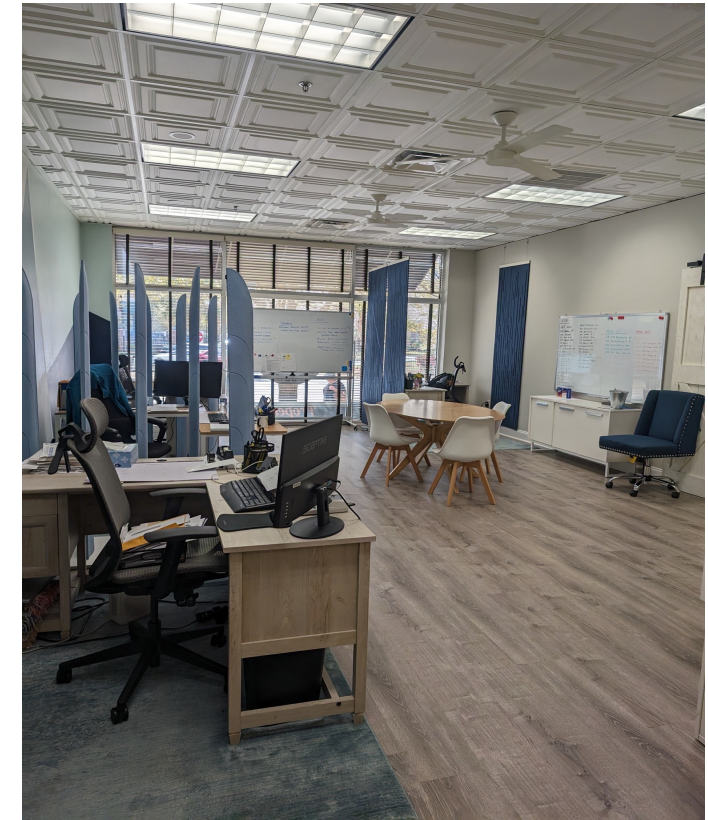
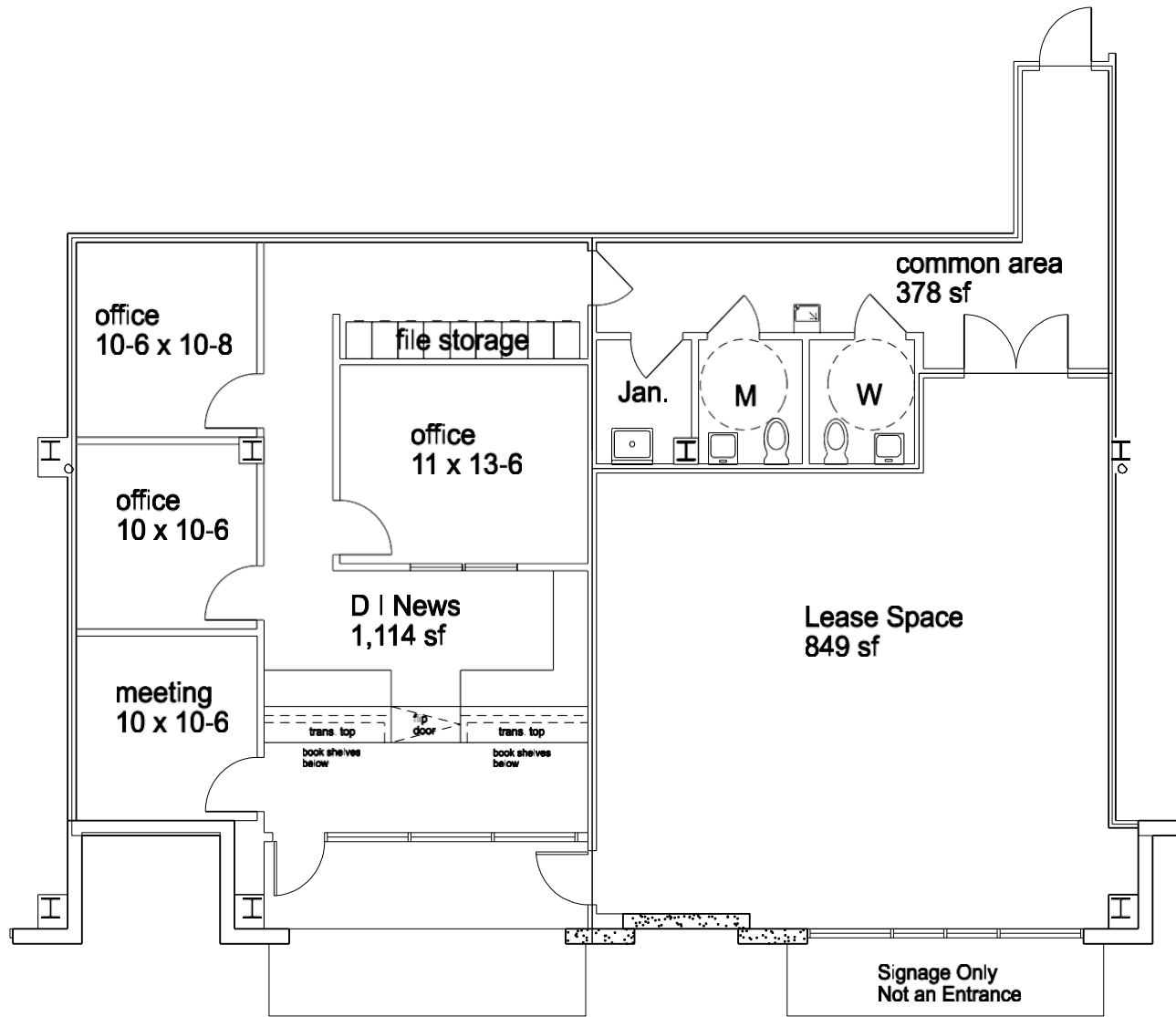
[Madeline.White@CharlestonIndustrial.com](mailto:Madeline.White@CharlestonIndustrial.com)

[Mike.White@CharlestonIndustrial.com](mailto:Mike.White@CharlestonIndustrial.com)

[Mike.White@CharlestonIndustrial.com](mailto:Mike.White@CharlestonIndustrial.com)

225 Seven Farms Drive, Suite 108 B – 1,012 RSF  
Daniel Island, SC

225 Seven Farms Drive, Suite 108 B – 1,012 RSF  
Daniel Island, SC



Michael G. White, SIOR, CCIM  
Broker-in-Charge  
843.819.1234

**CHARLESTON INDUSTRIAL**

Madeline Mary White  
Leasing Agent  
843.819.0122

[Madeline.White@CharlestonIndustrial.com](mailto:Madeline.White@CharlestonIndustrial.com)

Michael G. White, SIOR, CCIM  
Broker-in-Charge  
843.819.1234

**CHARLESTON INDUSTRIAL**

Madeline Mary White  
Leasing Agent  
843.819.0122

[Madeline.White@CharlestonIndustrial.com](mailto:Madeline.White@CharlestonIndustrial.com)

[Mike.White@CharlestonIndustrial.com](mailto:Mike.White@CharlestonIndustrial.com)

[Mike.White@CharlestonIndustrial.com](mailto:Mike.White@CharlestonIndustrial.com)